



40 Cheshire Crescent

ST7 2FE

£260,000



3



3



1



B



STEPHENSON BROWNE

CUL-DE-SAC LOCATION - IDEAL FIRST TIME BUY - A beautifully styled, turn-key three bedroom semi detached home located on Cheshire Crescent. Situated on the highly desired Scholars Place development, constructed by David Wilson, you are conveniently close to Alsager town and it's local amenities including the High School, Sports Hub and Leisure Centre all within walking distance. This wonderful property provides excellent accommodation for a range of buyers whether you are an upsizing family, investor or looking to take that first step onto the property ladder!

Upon entry, you welcomed into the entrance hall with access to the downstairs WC as well as the cosy yet spacious lounge. On from here is the inner hall with stairs to the first floor and entry into the kitchen diner, a bright and airy room courtesy of the UPVC French doors opening to the garden. Comprising of a range of contemporary gloss units, you have all of the integral appliances you could need and plenty of space for a family dining table. The first floor is home to two generous double bedrooms, with the principal enjoying it's own en-suite shower room, a well proportioned single bedroom and finally a family bathroom with three piece suite.

Externally, the property boasts a great position on the development in a cul-de-sac location with parking to suit two cars. To the rear is a well maintained, landscaped garden offering Indian stone paving and lawn.

To truly appreciate the size, internal condition and favourable position of Cheshire Crescent, early viewings come highly recommended. Call Stephenson Browne today to arrange yours and avoid missing out!



Entrance Hall

Composite entrance door. Single panel radiator. Door into:-

Downstairs WC

5'3" x 3'2"

Two piece suite comprising a low level wc with push button flush and a pedestal wash hand basin with mixer tap and splashback tiling. Single panel radiator.

Lounge

14'11" x 11'11"

Double glazed window to the front elevation. Two single panel radiators. Multimedia point having TV aerial points and telephone points. Understairs storage cupboard. Door into:-

Inner Hallway

Stairs to the first floor. Single panel radiator. Door into:-

Kitchen Diner

10'9" x 15'5"

Range of wall, base and drawer units with work surfaces over incorporating a stainless steel single drainer sink unit with mixer tap. Integrated oven with gas hob and extractor canopy over. Integrated fridge freezer, dishwasher and washing machine. Undercounter lighting. Splashback tiling. Double panel radiator. Double glazed window to the rear elevation. Double glazed French doors opening to the rear garden.

First Floor Landing

Doors to all rooms. Loft access point. Storage cupboard with hanging rail and shelving.

Principal Bedroom

9'4" x 10'8"

Two double glazed windows to the rear elevation. Single panel radiator.

En-Suite Shower Room

6'5" x 4'6"

Three piece suite comprising a low level WC with push button, pedestal wash hand basin with mixer tap and splashback tiling, and a shower cubicle with shower over. Heated towel rail. Shaver point.

Bedroom Two

8'1" x 12'7"

Double glazed window to the front elevation. Single panel radiator.

Bedroom Three

7'6" x 7'1"

Double glazed window to the front elevation. Single panel radiator.



Family Bathroom

6'0" x 6'4"

Three piece suite comprising a low level WC with push button, pedestal wash hand basin with mixer tap and splashback tiling, and a panelled bath with mixer tap. Heated towel rail. Partially tiled walls.

Externally

The front of the property is approached by a tarmac driveway providing parking for two vehicles. Paved pathway leading down the side of the property to the rear garden. The rear garden is partially laid to lawn with a paved patio area providing ample space for garden furniture. Fenced boundaries.

Council Tax Band

The council tax band for this property is C.

NB: Tenure

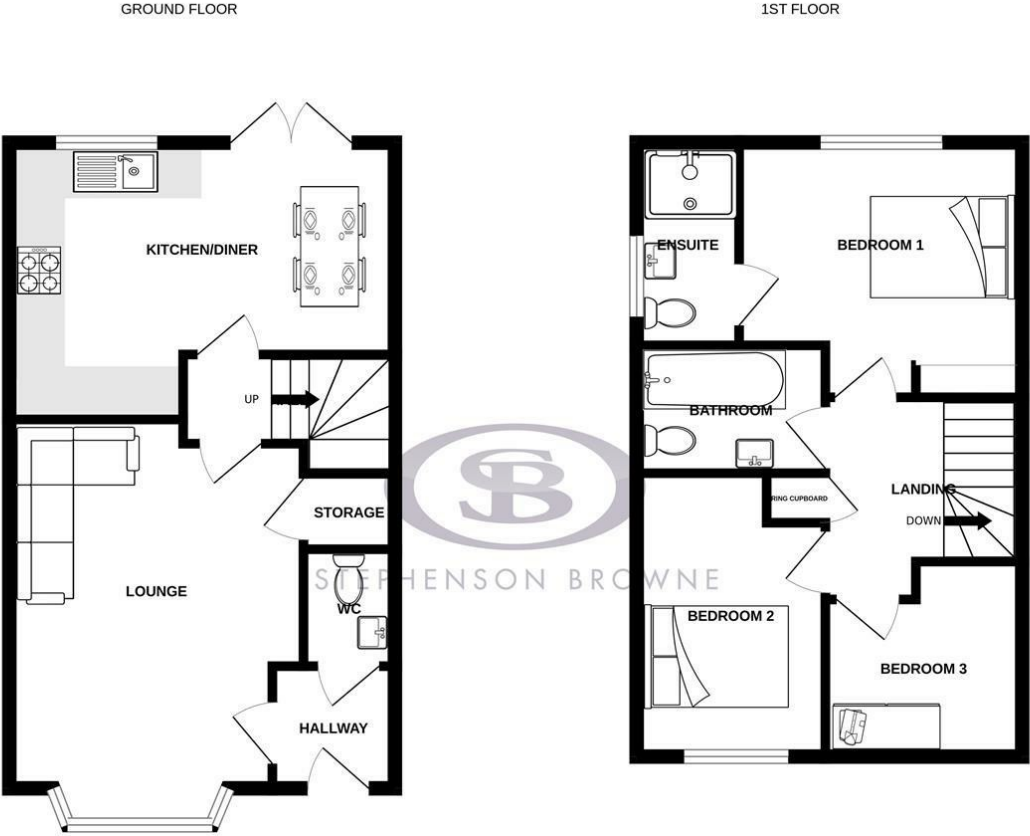
We have been advised that the property tenure is FREEHOLD, we would advise any potential purchasers to confirm this with a conveyancer prior to exchange of contracts.

NB: Copyright

The copyright of all details, photographs and floorplans remain the possession of Stephenson Browne.

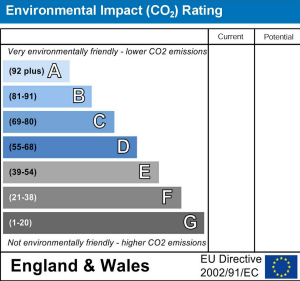
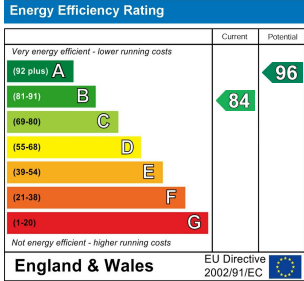


Floor Plan



Whilst every attempt has been made to ensure the accuracy of the floorplan contained here, measurements of doors, windows, rooms and any other items are approximate and no responsibility is taken for any error, omission or mis-statement. This plan is for illustrative purposes only and should be used as such by any prospective purchaser. The services, systems and appliances shown have not been tested and no guarantee as to their operability or efficiency can be given.
Made with Metropix ©2024

Area Map



Viewing

Please contact our Alsager Office on 01270 883130 if you wish to arrange a viewing appointment for this property or require further information.

NOTICE: Stephenson Browne for themselves and for the vendors or lessors of this property whose agents they are give note that: (1) the particulars are set out as a general guideline only for the guidance of intending purchasers or lessees. and do not constitute, nor constitute part of, an offer or contract; (2) all descriptions, dimensions, references to condition and necessary permissions for use and occupation, and other details are given in good faith and are believed to be correct but any intending purchasers or tenants should not rely on them as statements or representations of fact but must satisfy themselves by inspection or otherwise as to be the correctness of each theme; (3) no person in the employment of Stephenson Browne has any authority to make representation or warranty in relation to this property; (4) fixtures and fittings are subject to a formal list supplied by the vendors solicitor. Referring to: Move with Us Ltd Average fee: £123.64

13 Crewe Road, Alsager, Stoke On Trent, ST7 2EW
T: 01270 883130 E: alsager@stephensonbrowne.co.uk W: www.stephensonbrowne.co.uk